

中國非破壞檢驗有限公司  
CHINA NON-DESTRUCTIVE INSPECTION CO., LTD.

中國非破壞檢驗有限公司英文經歷書  
REGISTRY AND RECORD

中 CND 檢

NO. : CND-RG-CME

REV. : 2019

PAGE : 1 OF 11

DATE : 01/09/2019

**中國非破壞檢驗有限公司**

台北市忠孝東路七段 629 號 電話：(02) 2782-5551，2783-9343

高雄市一心二路二巷一弄 2 號 1 樓 電話：(07) 334-7733，331-1819

**CHINA NON-DESTRUCTIVE INSPECTION CO., LTD.**

**629 SECTION 7 CHUNG HSIAO EAST ROAD，TAIPEI，TAIWAN 115**

**TEL：TAIPEI (02) 2782-5551，2783-9343 KAOHSIUNG，(07) 334-7733，331-1819**

**URL: <http://www.china-ndt.com.tw/> E-mail: [chinandt@www.china-ndt.com.tw](mailto:chinandt@www.china-ndt.com.tw)**

中國非破壞檢驗有限公司  
CHINA NON-DESTRUCTIVE INSPECTION CO., LTD.

中國非破壞檢驗有限公司英文經歷書  
REGISTRY AND RECORD

中 CND 檢

NO. : CND-RG-CME  
REV. : 2019  
PAGE : 2 OF 11  
DATE : 01/09/2019

1. COMPANY NAME : CHINA NON-DESTRUCTIVE INSPECTION CO., LTD.
2. CAPITAL : NTS 12,000,000.00 (US\$450,000.00)
3. ESTABLISHED : MARCH 20, 1970
4. BOARD OF DIRECTORS :
  - PRESIDENT 陳國興 CHEN, GWOSHENG
  - TAIPEI-PROJECT MANAGER 簡志桐 JEAN, JYH-TORNG
  - TAIPEI-PROJECT MANAGER 陳致霖 CHEN, JYH-LIN
  - KAOHSIUNG- PROJECT MANAGER 葉豐德 YEH, FENG-TE
5. LOCATIONS :
  - TAIPEI OFFICE :
    - 629 SECTION 7 CHUNG HSIAO EAST ROAD, TAIPEI, TAIWAN 11561
    - TEL: TAIPEI (02) 2782-5551, 2783-9343 FAX: (02) 2782-9706
  - KAOHSIUNG OFFICE :
    - FL. 1 NO. 2 ALY. 1 LN. 2 I-HSING SECOND ROAD, KAOHSIUNG, TAIWAN 80658
    - TEL: KAOHSIUNG (07) 334-7733, 331-1819 FAX: (07) 331-1138
6. BANKS : TAIPEI FUBON BANK, NAN-KONG BRANCH
7. SCOPE OF BUSINESS :
  - (1) RT : INDUSTRIAL X-RAY AND GAMMA-RAY RADIOGRAPHY
  - (2) UT : ULTRASONIC FLAW DETECTION
  - (3) UM : ULTRASONIC THICKNESS MEASUREMENT
  - (4) MT : MAGNETIC PARTICLE CRACK DETECTION
  - (5) PT : LIQUID PENETRANT INSPECTION
  - (6) LT : HOLIDAY DETECTION (PIN HOLE DETECTION)
  - (7) LT : LEAK TESTS OF VACUUM BOX
  - (8) VT : VISUAL INSPECTION)
  - (9) CM : COATING THICKNESS MEASUREMENT
  - (10) HM : HARDNESS MEASUREMENT
  - (11) NDT : STEEL STRUCTURE NDT SERVICE

中國非破壞檢驗有限公司  
CHINA NON-DESTRUCTIVE INSPECTION CO., LTD.

中國非破壞檢驗有限公司英文經歷書  
REGISTRY AND RECORD

中 CND 檢

NO. : CND-RG-CME

REV. : 2019

PAGE : 3 OF 11

DATE : 01/09/2019

**8. PERSONAL CONSTITUTION :**

LOCATION	TAIPEI	KAOHSIUNG	TOTAL
PRESIDENT	1	0	1
CLERK	2	1	3
INSPECTOR	15	13	28

LOCATION	TAIPEI	KAOHSIUNG	TOTAL
RADIATION EXPERT	2	2	4
RADIATION OPERATOR	14	11	25
LABOR'S SAFETY AND HYGIENCE CONTROLLER	13	13	26

NDT METHOD	RT	UT	MT	PT	ET	VT
SNTCT LEVEL III	0	1	1	1	0	0
SNTCT LEVEL II	14	18	19	19	5	18
SNTCT LEVEL I	2	1	4	5	0	4

SNTCT: The Society of Nondestructive Testing and Certification of Taiwan

CERTIFIED WELDING INSPECTOR	TAIPEI	KAOHSIUNG	TOTAL
AWS CWI	6	4	10
TWS TCWI	2	2	4

AWS: American Welding Society

TWS: Taiwan Welding Society

中國非破壞檢驗有限公司  
CHINA NON-DESTRUCTIVE INSPECTION CO., LTD.

中國非破壞檢驗有限公司英文經歷書  
REGISTRY AND RECORD

中 CND 檢

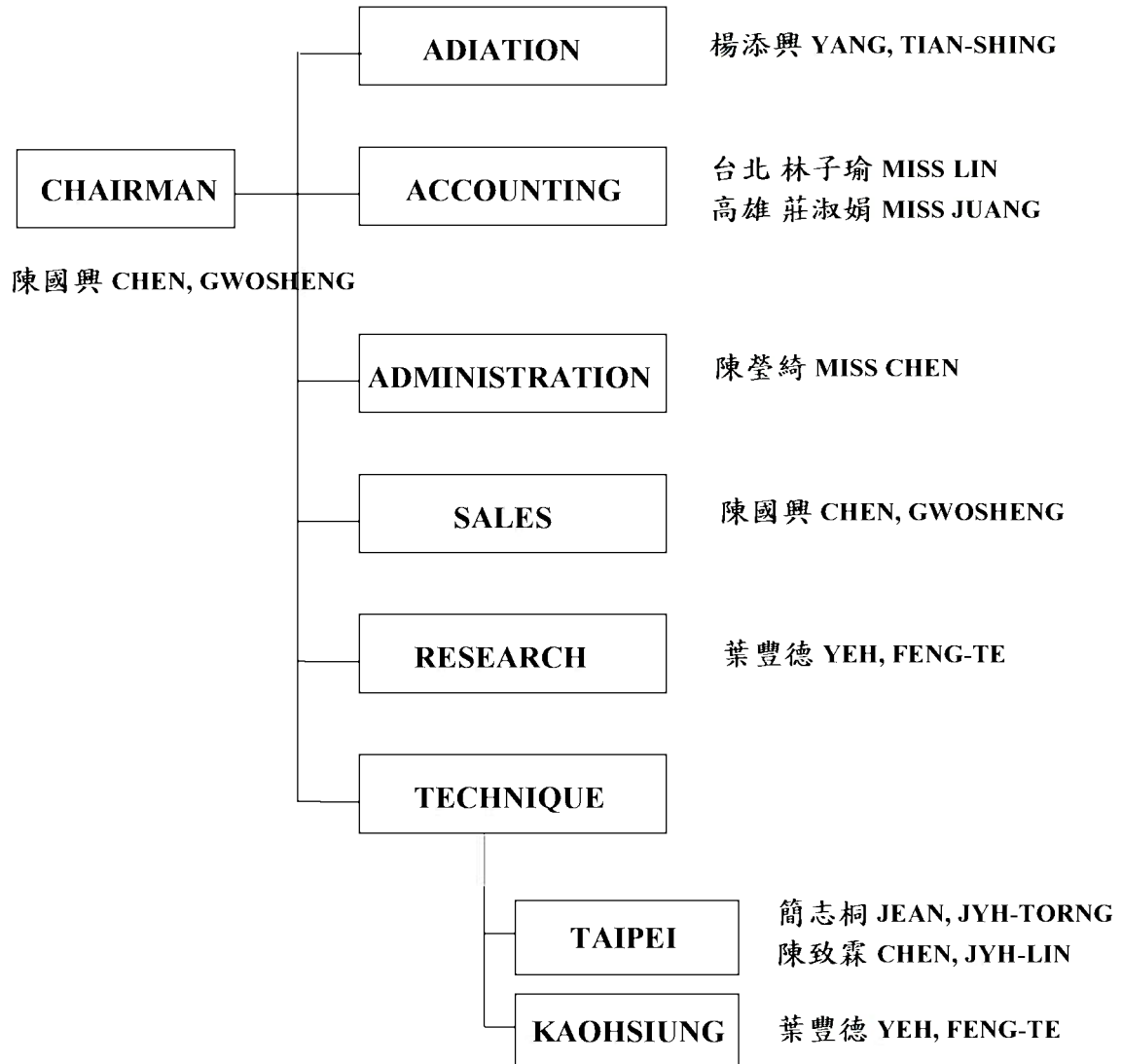
NO. : CND-RG-CME

REV. : 2019

PAGE : 4 OF 11

DATE : 01/09/2019

9. ORGANIZATION CHART :



中國非破壞檢驗有限公司  
CHINA NON-DESTRUCTIVE INSPECTION CO., LTD.

中國非破壞檢驗有限公司英文經歷書  
REGISTRY AND RECORD

中 CND 檢

NO. : CND-RG-CME  
REV. : 2019  
PAGE : 5 OF 11  
DATE : 01/09/2019

**10. NON-DESTRUCTIVE EQUIPMENT :**

RT EQUIPMENT	DESCRIPTION	QUANTITY
INDUSTRIAL X-RAY UNIT	JAPAN TOSHIBA, MODEL: EX-260GH- 1A	1
INDUSTRIAL X-RAY UNIT	JAPAN TOSHIBA, MODEL: EX-260GH- 2	1
INDUSTRIAL X-RAY UNIT	JAPAN TOSHIBA, MODEL: EX-260GH- 3	2
INDUSTRIAL X-RAY UNIT	JAPAN RIKOU, MODEL: RIX-200NM	1
RADIOISOTOPES IR-192	US I.N.C., MODEL: IR-100	4
IMAGE QUALITY INDICATORS	US ASME HOLE TYPE, US ASTM WIRE TYPE	150, 250
IMAGE QUALITY INDICATORS	JAPAN HOLE TYPE, JAPAN WIRE TYPE	20, 200
IMAGE QUALITY INDICATORS	EN WIRE TYPE, GERMANY DIN WIRE TYPE	66
IMAGE QUALITY INDICATORS	PROC GB JB HB WIRE TYPE	68
RADIATION SURVEY METER	US I.N.C., MODEL: 2, 4	20
PERSONAL RADIATION ALARM	US NDS, MODEL: ND-15	33
FILM ILLUMINATOR	JAPAN SEICO, KS-4, KF-17, TAIWAN	15
FILM DENSITOMETER	JAPAN KONICA, MODEL: PDA-100	3
FILM DEVELOPED TANK	TAIWAN, MODEL: TCU-607, TX-752	4
FILM DRY MACHINE	TAIWAN, 24 FILM HANGERS	10
FILM HANGERS	JAPAN 3 1/2X6"3 1/2X12"4 1/2X8 1/2"4 1/2X17"	750
TRANSPORTATION	TOYOTA ZACE-1800cc, INNOVA 2000cc	20

中國非破壞檢驗有限公司  
CHINA NON-DESTRUCTIVE INSPECTION CO., LTD.

中國非破壞檢驗有限公司英文經歷書  
REGISTRY AND RECORD

中 CND 檢

NO. : CND-RG-CME  
REV. : 2019  
PAGE : 6 OF 11  
DATE : 01/09/2019

UT EQUIPMENT	DESCRIPTION	QUANTITY
ULTRASONIC FLAW DETECTOR	GERMANY KRAUTKRAMER MODEL: USN 52L	4
ULTRASONIC FLAW DETECTOR	GERMANY KRAUTKRAMER MODEL: USN 58L	6
ULTRASONIC FLAW DETECTOR	US GE MODEL: USM-Go	14
PHASE ARRAY	US GE-PHASE ARRAY- phasor XS	1
ULTRASONIC PROBE	JAPAN MITSUBISHI, KGK, GERMANY K.K.	350
STANDARD BLOCK	STB-A1, STB-A2, STB-A3, STB-G, STB-N1	40
REFERENCE BLOCK	CNS, AWS, JIS, ASME, BS REFERENCE BLOCKS	40
REFERENCE BLOCK	JAPAN RB-T, RB-D	3
MULTI-STEP BLOCK	TAIWAN CS AL TI Cu DUPLUX INCONEL SS304 SS304L SS316L SS317L	10

MT EQUIPMENT	DESCRIPTION	QUANTITY
PORTABLE MT TEST UNIT	US MAGNAFLUX, MODEL: P-910,1000Amp	1
PERMANENT MAGNET	US PARKER, MODEL: PM-50	10
MAGNETIC YOKE KIT	JAPAN NIKKEN, MODEL: N-2Y	10
AC COIL	US MAGNAFLUX, MODEL L-10	2
BLACK LIGHT	JAPAN NIHON YUKEN, MODEL: SL-120 JAPAN NIKKEN, MODEL: BS-101	10
UV-A LED Flashlight	US SPECTROLIN, UVTech	5
DIGITAL RADIOMETERS	US SPECTRONICS, MODEL:DSE-100X	1
DIGITAL RADIOMETERS	US SPECTRONICS, MODEL:XRP-3000	2
FIELD INDICATOR	US MAGTEST DETEK	25
ARTIFICIAL FLAW SHIMS	US MAGNAFLUX QQI	20
CENTRIFUGE TUBE	US MAGNAFLUX	6
POCKET FIELD INDICATOR	US MAGNAFLUX	4
WEIGHT LIFT TEST BAR	US PARKER, MODEL: TB-10	2
WEIGHT LIFT/DEFECT TEST BAR	US PARKER, MODEL: TB-10	3
FLUORESCENT MAGNETIC BATH	US MAGNAFLUX, 14AM, 7HF	24 cans
DRY GRAY POWDER	US MAGNAFLUX NO.1 PARKER GP5-50	10 lb.
DRY RED POWDER	US MAGNAFLUX 8A TIEDE 611.04	45 lb.

中國非破壞檢驗有限公司  
CHINA NON-DESTRUCTIVE INSPECTION CO., LTD.

中國非破壞檢驗有限公司英文經歷書  
REGISTRY AND RECORD

中 CND 檢

NO. : CND-RG-CME

REV. : 2019

PAGE : 7 OF 11

DATE : 01/09/2019

PT EQUIPMENT	DESCRIPTION	QUANTITY
DYE PENETRANTS	US MAGNAFLUX, SKL-SP1, SKD-S2, SKC-S	96 cans
DYE PENETRANTS	US MET-L-CHECK, VP-30, D-70, E-59A	96 cans
FLUORESCENT	US MET-L-CHECK, FP-923	6 cans

OT EQUIPMENT	DESCRIPTION	QUANTITY
PINHOLE AND HOLIDAY DETECTOR	JAPAN SANKO, MODEL: TRC-100A, 5 - 23 KV 1 mm UP JAPAN SANKO, MODEL: TRC-110A, 5 - 23 KV 1 mm UP	6

LT EWUIPMENT	DESCRIPTION	QUANTITY
VACUUM PUMP	US JB, MODEL: PLATINUM DV-200N	1
VACUUM BOX (BUTT WELD)	TAIWAN MODEL: FL, 632×162 mm	3
VACUUM BOX (FILLET WELD)	TAIWAN MODLE: CMS, 482×162 mm	1

VT EQUIPMENT	DESCRIPTION	QUANTITY
TOOL KIT	AWS INSPECTION TOOL KIT	2
GAUGE	G.A.L. BRIDGE CAM GAUGE	20
MAGNIFIER	JAPAN FLASH MAGNIFIER	1
INSPECTION MIRROR	HTE-2LT, HTS-2LT	10
BORESCOPE	JAPAN 50cm STRAIGHT BORESCOPE	1
DIGITAL CAMERA	NIKON-CoolPix	25

COATING TESTER	DESCRIPTION	QUANTITY
COATING THICKNESS TESTER	JAPAN KETT, MODEL: LE-300, Thickness:1,500 μm	2
COATING THICKNESS TESTER	BS elcometer- Model: 456, Thickness: 5,000 μm	1

Hardness Measuring Equipment	DESCRIPTION	QUANTITY
HARDNESS TESTER	GERMANY K.K., DynaMIC DL TESTER GERMANY K.K., Dyna D 34248 1515 Impact Device	1

11. LABORATORY ACCREDITATION AND REGISTER OF OWNER :

02/01/1996	ISO/IEC 17025 : 2005 LABORATORY ACCREDITATION
	ACCREDITATION NO : 0226 CERTIFICATE NO : L0226-181026 ACCREDITED BY : TAIWAN ACCREDITATION FOUNDATION DATE ISSUED : 02/01/1996 DATE EXPIRED : 01/31/1999, 01/31/2002, 01/31/2005, 01/31/2008, 01/31/2011, 01/31/2014, 01/31/2017, 01/31/2020

**12. MAIN RECORD :**

**RADIOGRAPHIC INSPECTION : (X-RAY & GAMMA-RAY RADIOGRAPHY)**

- (1) 5,000 TONS AMMONIA STORAGE TANK
- (2) 300,000 KW STEAM POWER STATION
- (3) 100,000 TONS SHIPS
- (4) 400 TONS VCM STORAGE SPHERE
- (5) HIGH PRESSURE VESSELS, BOILERS & TUBES
- (6) 150 TONS PER DAY METHANOL PLANT
- (7) 50,000 TONS OIL STORAGE TANK & OIL PIPES
- (8) 40,000 KW RESEARCH REACTOR
- (9) 560,000 KW NUCLEAR REACTOR (PCV ONLY)
- (10) GAS PIPE LINES
- (11) 2,000 KL SPHERICAL TANK (ETHYLENE STORAGE)
- (12) 31 TONS CARGO CRANE

**ULTRASONIC INSPECTION :**

- (1) 40,000 KW RESEARCH REACTOR
- (2) 560,000 KW NUCLEAR REACTOR (PCV ONLY)
- (3) 2,000 KL SPHERICAL TANK (ETHYLENE STORAGE)
- (4) CRANK SHAFT, HIGH TEMP, BOLTS & STUDS, BALL MILL
- (5) AIRCRAFT PARTS
- (6) STEEL STRUCTURE BUILDING
- (7) STEEL STRUCTURE BRIDGE

**MAGNETIC PARTICLE INSPECTION :**

- (1) 22 STAIRS STRUCTURAL BUILDING
- (2) AUTOMOBILE & TRUCK PARTS
- (3) 560,000 KW NUCLEAR REACTOR (PCV ONLY)
- (4) 2,000 KL SPHERICAL TANK (ETHYLENE STORAGE)
- (5) CRANK SHAFT, TURBINE BLADES, CASING OF TURBINE
- (6) ENGINE, COMPRESSORS, SHIPS AND AIRCRAFT
- (7) STEEL STRUCTURE BUILDING
- (8) STEEL STRUCTURE BRIDGE

**LIQUID PENETRANT INSPECTION :**

- (1) 2,000 KL SPHERICAL TANK
- (2) 40,000KW RESEARCH REACTOR
- (3) 560,000 KW NUCLEAR REACTOR (PCV ONLY)

**HOLIDAY DETECTION (PIN HOLE DETECTION) :**

- (1) 6", 8" & 10" UNDERGROUND GAS PIPE LINE (ASPHALT COATING)
- (2) GLASS, ASPHALT OR PLASTIC LINING OF VESSELS & TANKS
- (3) 6" HIGH PRESSURE AMMONIA PIPE LINE



中國非破壞檢驗有限公司  
CHINA NON-DESTRUCTIVE INSPECTION CO., LTD.

中國非破壞檢驗有限公司英文經歷書  
REGISTRY AND RECORD

中 CND 檢

NO. : CND-RG-CME

REV. : 2019

PAGE : 9 OF 11

DATE : 01/09/2019

13. MAIN LOCAL CUSTOMERS :

**PETROCHEMICAL PLANT :**

**CHINESE PETROLEUM CORPORATION, KAOHSIUNG REFINING PLANT**

**CHINESE PETROLEUM CORPORATION, LINYUAN REFINING PLANT**

**CHINESE PETROLEUM CORPORATION, TA-LIN REFINING PLANT**

**CHINESE PETROLEUM CORPORATION, TA-LIN-PU REFINING PLANT**

**CHINESE PETROLEUM CORPORATION, TAOYUAN REFINING PLANT**

**CHINESE PETROLEUM CORPORATION, NATURAL GAS PIPELINE DIVISION**

**CHINESE PETROLEUM CORPORATION, STORAGE AND TRANSPORTATION**

**CHINA PETROCHEMICAL DEVELOPMENT CORP.**

**DU PONT TAIWAN LIMITED**

**FORMOSA PETROCHEMICAL CORPORATION**

**INVISTA Far Eastern Petrochemicals Ltd**

**TAIWAN FERTILIZER CO., LTD. HSINCHU FACTORY**

**TAIWAN FERTILIZER CO., LTD. MIAW-LI FACTORY**

**CONSTRUCTION:**

**BRIGHTNESS ENGINEERING CONSULTANT CO., LTD.**

**CHIEF CONSTRUCTION CORP.**

**CHINA ENGINEERING CONSULTANTS, INC.**

**CHUNG-LU CONSTRUCTION CO., LTD.**

**CTCI CORPORATION**

**FU TSU CONSTRUCTION CO., LTD.**

**INTERNATIONAL INSPECTION AND TESTING CORPORATION**

**KAILAY ENGINEERING CO., LTD.**

**LONG BANG CONSTRUCTION**

**OCEANEERING INTERNATIONAL**

**RUENTEX CONSTRUCTION & DEVELOPMENT CO., LTD.**

**TONG LING CENERAL CONTRACTOR CO., LTD.**

**STEEL MILLS :**

**CHINA STEEL CORP.**

**DRAGON STEEL CORPORATION**

**STEEL STRUCTURE FACTORY**

**CHINA STEEL STRUCTURE CO., LTD.**

**CHUN YUAN STEEL INDUSTRY CO., LTD.**

**EVERGREEN HEAVY INDUSTRIAL CORP.**

**INTERNATIONAL STEEL COMPANY**

**TOKO STEEL STRUCTURE CORP.**

**CENTURY IRON AND STEEL INDUSTRIAL CO., LTD.**

**CHIAO HIS OR STEEL INDUSTRY CO., LTD**

中國非破壞檢驗有限公司  
CHINA NON-DESTRUCTIVE INSPECTION CO., LTD.

中國非破壞檢驗有限公司英文經歷書  
REGISTRY AND RECORD

中 CND 檢

NO. : CND-RG-CME  
REV. : 2019  
PAGE : 10 OF 11  
DATE : 01/09/2019

**WAN CHI STEEL INDUSTRIAL CO., LTD.**

**MACHINERY FACTORY**

**CHENG CHEN MACHINERY CO., LTD.**

**TECO ELECTRIC & MACHINERY CO., LTD.**

**CHUNG-HSIN ELECTRIC & MACHINERY MFG.CORP.**

**SHIPYARD :**

**CHINA SHIPBUILDING CORP. KAOHSIUNG SHIPYARD**

**CHINA SHIPBUILDING CORP. KEELUNG SHIPYARD**

**POWER PLANT :**

**TAIWAN POWER CO., NUCLEAR POWER STATION**

**TAIWAN POWER CO., LIN-KOU POWER PLANT**

**TAIWAN POWER CO., TA-LIN POWER PLANT**

**TAIWAN POWER CO., SHEN-AU POWER PLANT**

**FIBER PLANT :**

**CHANG CHUN PLASTICS CO., LTD.**

**CHINA MAN-MADE FIBER CORP.**

**FORMOSA CHEMICAL & FIBER CORP.**

**LIAN YU INDUSTRIAL CO.**

**ORIENTAL CHEMICAL FIBER CORP.**

**PACIFIC ENTERPRISE LTD.**

**SHINKONG SYNTHETIC FIBER CORP.**

**TA MING NYLON CO.**

**CEMENT PLANT :**

**ASIA CEMENT CORP. CHU-TONG PLANT**

**ASIA CEMENT CORP. HWA-LIEN PLANT**

**CHIEN-TAI CEMENT CO.**

**NATURAL GAS COMPANY:**

**SHIN LUNG NATURAL GAS CO., LTD.**

**SHIN SHIN NATURAL GAS CO., LTD.**

**TRANSPORTATION :**

**CHINA AIRLINES**

**FAR EASTERN AIR TRANSPORT CORP.**

**KAOHSIUNG RAPID TRANSIT CORP.**

**TAIPEI RAPID TRANSIT CORP.**

中國非破壞檢驗有限公司  
CHINA NON-DESTRUCTIVE INSPECTION CO., LTD.

中國非破壞檢驗有限公司英文經歷書  
REGISTRY AND RECORD

中 CND 檢

NO. : CND-RG-CME

REV. : 2019

PAGE : 11 OF 11

DATE : 01/09/2019

**14. MAIN FOREIGN CUSTOMERS :**

<b>FRANCE</b>	<b>Bureau Veritas Taiwan Branch</b>
<b>FRANCE</b>	<b>GEC Alsthom Taiwan Co., Ltd</b>
<b>GERMANY</b>	<b>Magnetische Prufanlagen GmbH</b>
<b>GERMANY</b>	<b>NOELL-TAIWAN BRANCH</b>
<b>GERMANY</b>	<b>Siemens, Taiwan Branch</b>
<b>GERMANY</b>	<b>TUV Rheinland Taiwan Ltd.</b>
<b>HONGKONG</b>	<b>JOSEF GARTNER &amp; CO. (HK) LTD. TAIWAN BRANCH</b>
<b>JAPAN</b>	<b>EBARA KILAY</b>
<b>JAPAN</b>	<b>NKK CORPORATION</b>
<b>JAPAN</b>	<b>NIPPON STEEL CO., LTD.</b>
<b>JAPAN</b>	<b>OBAYASHI CORPORATION Taiwan Branch</b>
<b>JAPAN</b>	<b>SHIMIZU CORPORATION TAIPEI OFFICE</b>
<b>JAPAN</b>	<b>TAISEI CORPORATION TAIPEI BRANCH</b>
<b>THAILAND</b>	<b>Italian-Thai Development Public Company Limited</b>
<b>USA</b>	<b>VOITH HYDRO, INC.</b>
<b>USA</b>	<b>Wolfe Engineering</b>